

SUSSEX  
CATTLE  
SOCIETY



2024  
BULL  
CATALOGUE

# TROTTENDEN ASTRONOMER 2ND 22-1447

UK260343/100684 Born 24/01/2022



Paternal Grand Sire: Goldstone Poll Stargazer 1st 13-1271-P

Sire: Boxted Astronomer 1st 17-1141

Paternal Grand Dam: Boxted Finch 99th 13-0584

Maternal Grand Sire: Petworth Regent 11th 13-1263

Dam: Trottenden Terpsichore 171st 19-0354

Maternal Grand Dam: Trottenden Terpsichore 154th 15-0863

EBV - 56

|         |        |        |        |        |        |
|---------|--------|--------|--------|--------|--------|
| Weights | 100day | 200day | 300day | 400day | 500day |
|         | 140kg  | 246kg  | 375kg  | 489kg  | 604kg  |

Member of Biobest Health Scheme, BVD accredited and Signet Recorded.

This bull has been fertility tested and individually test for BVD, IBR, Johnes and Lepto.

Contact: 01580 211201 / 07765950044 (Kent)





# BOWERLAND POLL CAPTAIN 3RD 22-1450-P

UK271599/500247 Born 22/03/2022



Paternal Grand Sire: Mayfield Poll Captain 9th 13-0997-P

Sire: Bowerland Poll Captain 1st 16-1194-P

Paternal Grand Dam: Trottenden Poll Terpsichore 3rd 12-0239-P

Maternal Grand Sire: Southview Poll Stargazer 2nd 13-1272-P

Dam: Bowerland Prebble 4th 16-0027-P

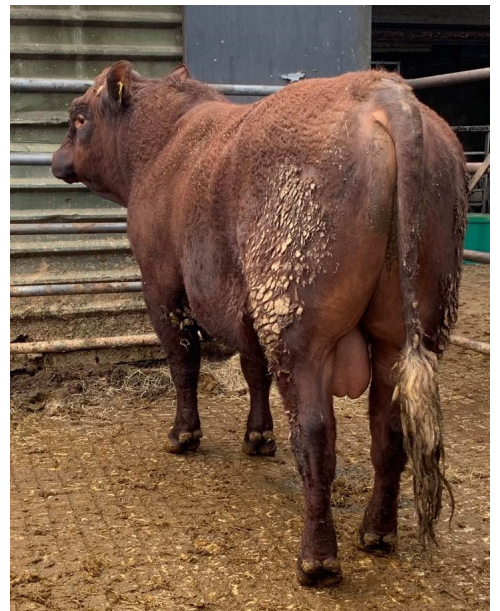
Maternal Grand Dam: Bowerland Prebble 1st 13-0797

Elite status HiHealth Scheme since 2009.

The herd is Accredited free of IBR (2019), Lepto (2018), BVD (2019). Risk Level 1 for Johne's since 2019.

Four year TB parish.

Contact: Richard Horsman 07801 217490





# BOWERLAND POLL CAPTAIN 4TH 22-1451-P

UK271599/700228 Born 12/03/2022



Paternal Grand Sire: Mayfield Poll Captain 9th 13-0997-P

Sire: Bowerland Poll Captain 1st 16-1194-P

Paternal Grand Dam: Trottenden Poll Terpsichore 3rd 12-0239-P

Maternal Grand Sire: Southview Poll Stargazer 2nd 13-1272-P

Dam: Bowerland Prebble 12th 18-0445

Maternal Grand Dam: Bowerland Prebble 2nd 14-0210

Elite status HiHealth Scheme since 2009.

The herd is Accredited free of IBR (2019), Lepto (2018), BVD (2019). Risk Level 1 for Johne's since 2019. Four year TB parish.

**Contact: Richard Horsman 07801 217490**



# BOWERLAND POLL STARGAZER 9TH 22-1452-P

UK271599/100250 Born 24/03/2022



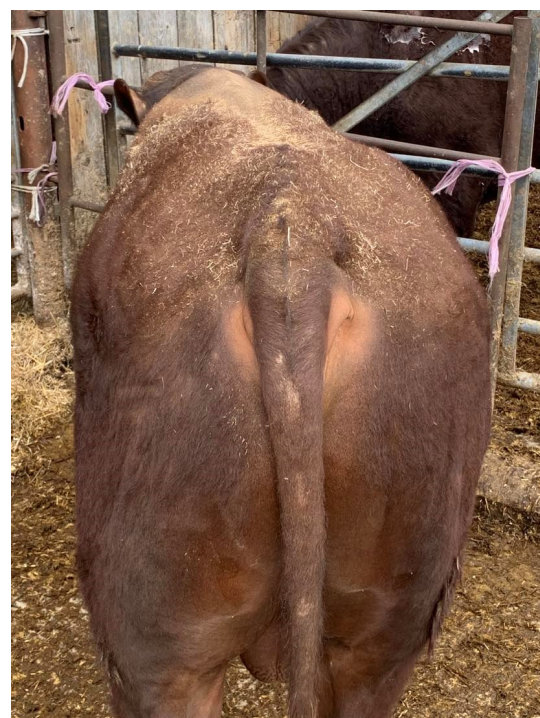
Paternal Grand Sire: Southview Poll Stargazer 2nd 13-1272-P  
Sire: Bowerland Poll Stargazer 1st 18-1043-PP  
Paternal Grand Dam: Matts Poll Terpsichore 1st 15-0344-P

Maternal Grand Sire: Elbridge Formidable 3rd 16629  
Dam: Trottenden Buttercup 11th 09-1183  
Maternal Grand Dam: Trottenden Buttercup 6th 90003

Elite status HiHealth Scheme since 2009.

The herd is Accredited free of IBR (2019), Lepto (2018), BVD (2019). Risk Level 1 for Johne's since 2019. Four year TB parish.

**Contact: Richard Horsman 07801 217490**





# SOUTHVIEW POLL SULTAN 3RD 21-1754-P-B

UK331686/500133 Born 03/04/2021



Paternal Grand Sire: Greensons Howwlett GAT-12-192

Sire: Southview Poll Sultan 1st 18-1321-P-A

Paternal Grand Dam: Goldstone Gaiety 64th 13-0846

Maternal Grand Sire: Allen's Major 1st 08-0993

Dam: Goldstone Poll Gaiety 77th 16-0332-P

Maternal Grand Dam: Gaiety 47th of Goldstone 11-0438-P-B

Proven sire with no assisted calvings including a first calved heifer. BVD free herd.

Will be fertility tested prior to leaving.

One year TB Parish.

| Adjusted weights | 100 Day | 200 Day | 300 Day | 400 Day | 500 Day | Scanned |
|------------------|---------|---------|---------|---------|---------|---------|
| Weight (kg)      | 181     |         | 427     | 504     | 617     | Y       |

| Analysis Date: 08-12-23 | Birth Weight EBV | Calving Ease EBV | Calving Value EBV | 200 Day Weight EBV | 400 Day Weight EBV | Muscle Depth EBV | Fat Depth EBV | Beef Value | Maternal Value |
|-------------------------|------------------|------------------|-------------------|--------------------|--------------------|------------------|---------------|------------|----------------|
| EBV                     | 1.40             | -0.60            | 1                 | 34                 | 67                 | 4.90             | 0.40          | 44         | 15             |
| ACC                     | 61%              | 47%              | 49%               | 69%                | 72%                | 65%              | 59%           | 70%        | 33%            |

Contact: Philip Ashby 01225864102 / 07971241082



# TITSEY DUKE 3RD 20-1854

UK261523/302276 Born 29/04/202



Sire: Goldstone Poll Duke 4th 13-1270-P-B

Pat.g.s: Duke 5th of Goldstone 09-1201-P

Pat.g.d: Dawn 1st of Goldstone 90407-P-A

Dam: Titsey Thistle 3rd 12-0915

Mat.g.s: Boxted Regent 8th 08-0837

Mat.g.d: Herrings Thistle 7th 89035

TB4 Area

BVD Free herd

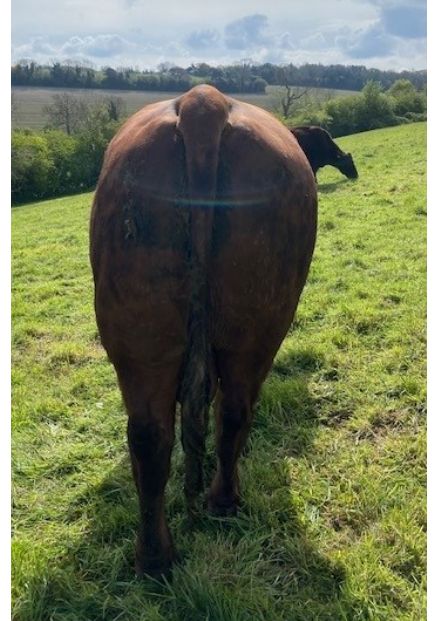
Good feet, been trimmed March 24

Quiet Temperament

Daughters coming back into the herd

Running with cows now, will be available in June

Contact: Skye Lindsay 07719417066





# COOPERS REGENT 1ST 16-0931

UK266661/500157 Born 16/01/2016



Paternal GS: Poll Regent 1st of Goldstone 08-0807-P  
Sire: Poll Regent 7th of Goldstone 11-1054-P  
Paternal GD: Poll Snowdrop 66th of Goldstone 91191-P

Maternal GS: Mayfield Major 9th 06-0604  
Dam: Coopers Snowdrop 10th 09-0591  
Maternal GD: Coopers Snowdrop 5th 06-0077

Coopers Regent 1st is a Superstar within the Sussex breed.  
*(Credit has to go to Jane Howard who bred him of course).*

This is a rare opportunity to buy a bull of his pedigree as well as his tried and tested genetics.

Sussex Bull of the Year 2019.

He has been recently vetted, semen tested and blood tested in preparation for sale.

We are in a low risk 4 year TB area.

He has served us very well with some fantastic calves and 100% fertility rates.

Contact Tom Monnington 07796156632



Sired by Coopers Regent 1st



# PETWORTH REGENT 11TH 13-1263

UK263412/200992    Born 24/04/2013



Pat GS : Boxted Regent 3rd 16680

Sire : Poll Regent 4th of Goldstone 09-1025-P

Pat GD : Lofty Lily 17th of Goldstone 87316-P

Mat GS : Mayfield Major 1st 16565

Dam : Petworth Snowdrop 11th 90163

Mat GD : Petworth Snowdrop 8th 88072

Member of Biobest Health Scheme, BVD accredited and Signet Recorded

Winner of the Best Bull in the Intermediate Herd Competition 2023

**Contact: 01580 211201 / 07765950944 (Kent)**